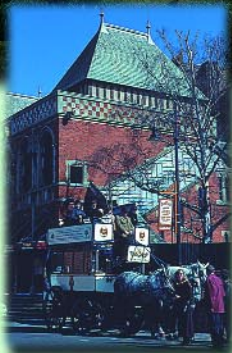




◀ Just a short walk from the Stratford canal at Wilmcote, you can feel you're a privileged visitor to Mary Arden's house, when you visit it by canal.



◀ Take a ride through Stratford on a horse drawn bus. This one is pictured near the Swan Theatre.



▶ Half timbered houses in the delightful old town of Tewkesbury. Many towns turned their best sides to the rivers and canals, offering you views seldom noticed by those on land.



▶ The delicate spire of the 18th century St. Bartholomew's church at Tardebigge forms part of a charming rural scene on the upper reaches of the Worcester-Birmingham Canal.

Starting up the Tardebigge flight, you join the North Stratford Canal at Kings Norton, and on to the South Stratford Canal, where the canal character changes with split bridges and 'barrel-roofed' cottages. At Stratford you can moor opposite the theatre before joining the River Avon.

The Avon, different again, meanders down to Tewkesbury, through Evesham, where you join the River Sever for a short trip up to Worcester, before returning home. Avon Licence required.

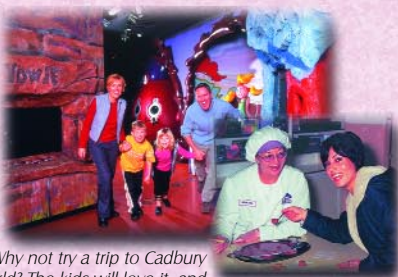
An easy two week trip.

ROUTE	NO. OF WEEKS	NO. OF MILES	NO. OF LOCKS	HOURS A DAY
C	2	109	131	5

The Avon ring



▶ Warwick's famous 14th century castle is set delightfully on the banks of the River Avon.



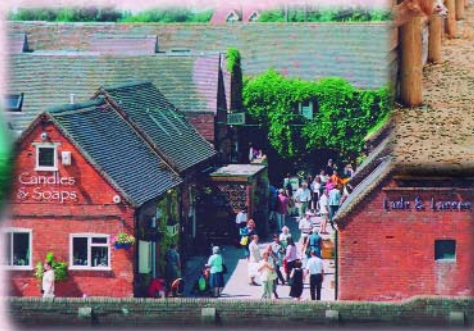
▶ Why not try a trip to Cadbury World? The kids will love it, and the chocoholic mums! (Prior booking required)

▶ Drayton Manor Park and Zoo, a must-see for all the family

▶ Millions of pounds have been spent transforming the centre of Birmingham to face the canal. Here is the National Indoor Arena.



▶ Take time to visit Hatton Country Park, there's gift shops, and fun for the kids where they can feed the animals too.



Up the Tardebigge flight to the North Stratford at Kings Norton, you continue to the Grand Union. Travelling South, you progress through the Hatton flight, via Warwick and Leamington Spa to Napton and Braunston. From Braunston, you travel the North Oxford & Coventry (perhaps taking in the Ashby or Coventry itself) to Fazeley, and then head into the centre of Birmingham via Farmers Bridge locks. Home down the Worcester and Birmingham via Tardebigge. A more strenuous fortnight.

ROUTE	NO. OF WEEKS	NO. OF MILES	NO. OF LOCKS	HOURS A DAY
D	2	128	190	7

The Warwickshire ring

