



### AUDIO AND TELEMATICS



- Engine not running
  - Short press: on/off.
  - Long press: CD pause, mute for the radio.
- Engine running
  - Short press: CD pause, mute for the radio.
  - Long press: reinitialisation of the system.
- Volume adjustment (each source is independent, including also navigation messages and alerts).
- Access to the "Radio" Menu. Display the list of stations.
- Access to the "Music" Menu. Display the tracks.
- Access to the "SETUP" menu.
  - Long press: access to the GPS coverage and the demonstration mode.



- On/Off and volume adjustment.
- CD eject.
- Selection of the display on the screen from the following modes: Audio (AUDIO), Trip Computer (TRIP) and Telephone (TEL) functions.
- Selection of source: radio, audio CD/MP3 CD, USB, Jack connection, Streaming.
- Selection of FM1, FM2, FMast and AM.

### Bonnet



- Interior release lever.
- Exterior safety catch.
- Bonnet stay.

### MAIN MENU



☞ Press the "MENU" button to gain access to the main menu.

### FUEL TANK



- Opening the fuel filler flap.
  - Opening and hooking the fuel filler cap.
- Capacity of the tank: approximately 50 litres (petrol) or 48 litres (Diesel).

### MISFUEL PREVENTION

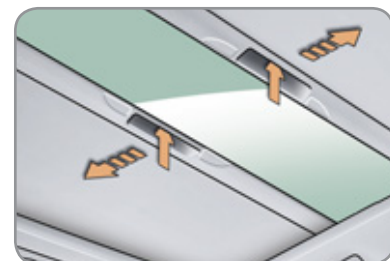
Mechanical device which prevents filling the tank of a Diesel vehicle with petrol. It avoids the risk of engine damage that can result from filling with the wrong fuel.

Located in the filler neck, the misfuel prevention device appears when the filler cap is removed.

When a petrol filler nozzle is introduced into the fuel filler neck of your Diesel vehicle, it comes into contact with the flap. The system remains closed and prevents filling.

**Do not persist but introduce a Diesel type filler nozzle.**

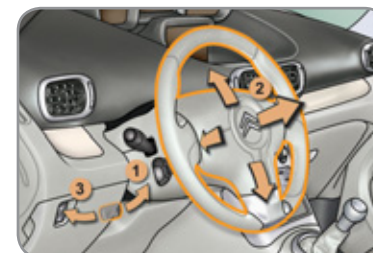
### PANORAMIC GLASS SUNROOF



☞ Lift the handle of the blind concerned and release.



### STEERING WHEEL ADJUSTMENT



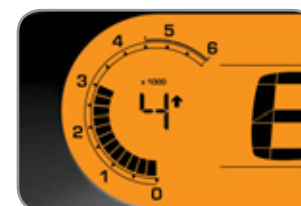
- Release the adjustment mechanism.
- Adjust for height and reach.
- Lock the adjustment mechanism.

### ELECTRIC WINDOWS



- Driver's electric window control switch.
- Passenger's electric window control switch.
- Rear right electric window control switch.
- Rear left electric window control switch.
- Deactivating the rear electric window and door controls.

### GEAR SHIFT INDICATOR



System which reduces fuel consumption by advising the driver to change up on vehicles fitted with a manual gearbox.

# READY TO GO CITROËN C3 PICASSO

### REMOTE CONTROL KEY



- Unfolding/Folding the key.
- Unlocking the vehicle.
- Normal locking of the vehicle. Vehicle location.

### DOOR MIRRORS



- Move control A to the right or to the left to select the corresponding mirror.
- Move control B in all four directions to adjust.

### PARKING BRAKE



#### Applying

☞ Pull the parking brake lever fully up to immobilise your vehicle.

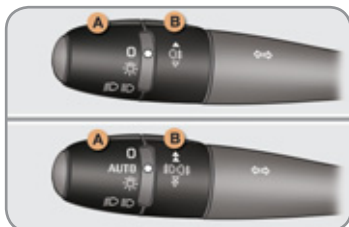
#### Releasing

☞ Pull the parking brake lever gently, press the release button then lower the lever fully.



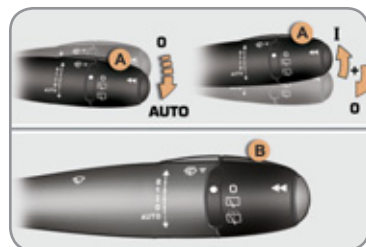
- SPEED LIMITER "LIMIT"**
1. Limiter mode Selection/Off.
  2. Decrease the programmed value.
  3. Increase the programmed value.
  4. Speed limiter On/Off.
- CRUISE CONTROL "CRUISE"**
1. Cruise control mode Selection/Off.
  2. Programming a speed/Decrease the programmed value.
  3. Programming a speed/Increase the programmed value.
  4. Cruise control Off/Resume.

### LIGHTING CONTROLS



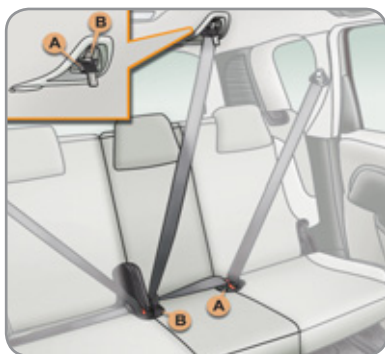
- Ring A**
- O** Lighting off.
  - AUTO** Automatic illumination of headlamps.
  - Sun icon** Sidelamps.
  - DIP** Dipped/main beam headlamps.
- Ring B**
- Rear fog icon** Rear foglamp.
  - or
  - Front fog icon** Front and rear foglamps.

### WIPER CONTROLS



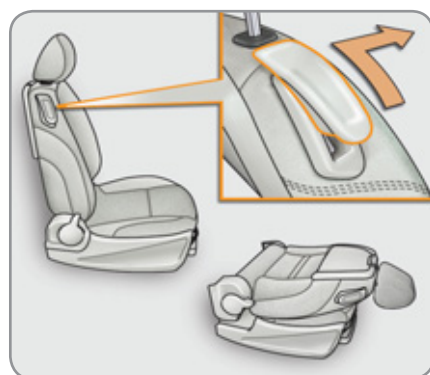
- Control stalk A: windscreen wipers**
- 2** fast (heavy rain),
  - 1** normal (moderate rain),
  - 1** intermittent (proportional to the speed of the vehicle),
  - 0** park,
  - ↓** single wipe (press down and release),
  - AUTO ↓** automatic, then single wipe.
- Ring B: rear wiper**
- O** Park.
  - Intermittent icon** Intermittent wipe.
  - Wash icon** Wash-wipe.

### 2ND ROW REAR CENTRE SEAT BELT



The seat belt for the rear centre seat of the 2nd row is incorporated at the rear left of the roof.

### TABLE POSITION OF THE FRONT PASSENGER SEAT



### REAR SCREEN DEMIST/DEFROST

I require...	Heating or Manual air conditioning				
	Air distribution	Air flow	Air recirculation/ Exterior air intake	Temperature	Manual A/C
HEAT					—
COOL					<b>ON</b>
DEMISTING DEFROSTING					<b>ON</b>

**Digital air conditioning:** we recommend use of the fully automatic mode by pressing the "AUTO" button, after selecting the level of comfort required.

### FRONT SEATS



1. Forwards-backwards adjustment.
2. Driver's seat height adjustment.
3. Seat back angle adjustment.

### 2-POSITION ADJUSTABLE BOOT



#### Placing the adjustable boot floor in the low position

- Lift the adjustable boot floor by pulling on the strap.
- Move the adjustable boot floor rearwards and then down, following the guides on the sides.

#### Placing the adjustable boot floor in the high position

- Lift the adjustable boot floor by pulling the strap.
- Move the adjustable boot floor rearwards then up to its high position.